



Opens the future

LINEA CATALOGUE

SOLUTIONS FOR THE AUTOMATION OF SLIDING DOORS



EVERY DAY, FOR MORE THAN 25 YEARS,
WE AT BFT HAVE BEEN MAKING LIFE
FOR MILLIONS OF PEOPLE MORE COMFORTABLE AND MORE SECURE
IN MORE THAN ONE HUNDRED COUNTRIES WORLDWIDE.

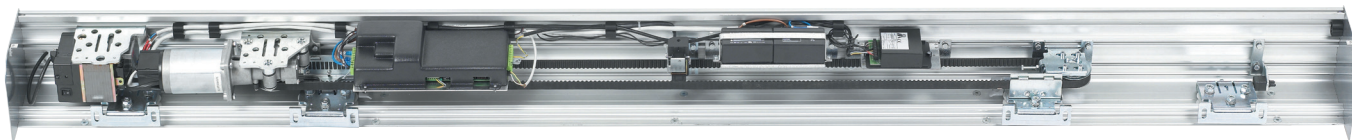


Shops, offices, banks and shopping centres: there are lots of possibilities for installing our versatile and functional automatic doors. With accessories and security devices, BFT offers a broad range of profiles and seals to provide a wide range of opportunities for customizing the installation.

LINEA

ELECTROMECHANICAL AUTOMATION FOR PEDESTRIANS DOORS

4



• A MODEL FOR EVERY NEED.

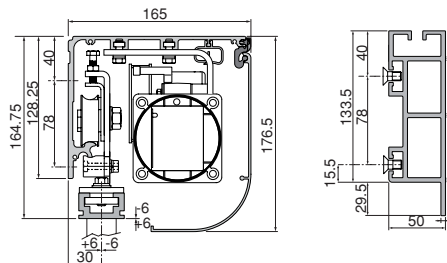
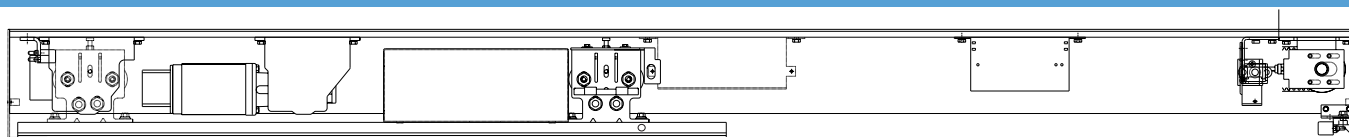
- Several versions available: for single leaf with 150 kg max. weight or for two leaves with max. weight 120+120 kg.
- Possibility of installing glass leaves.
- A wide range of accessories.

• SIMPLER INSTALLATION.

- Incorporated control unit.
- The door can be configured in different ways by means of the practical PFD pushbutton panel.
- Guard raisable for maintenance.
- Configurable using the Proxima programmer thanks to compatibility with the EELink protocol.



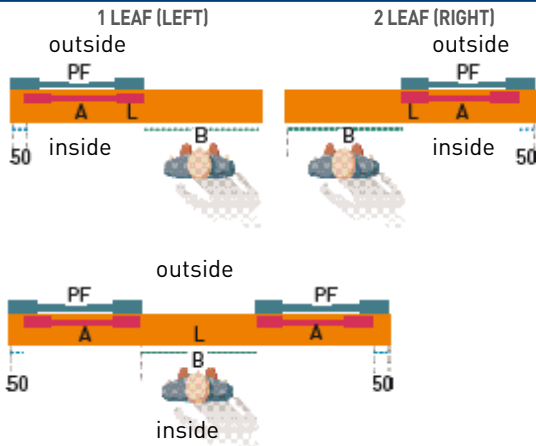
DIMENSIONS



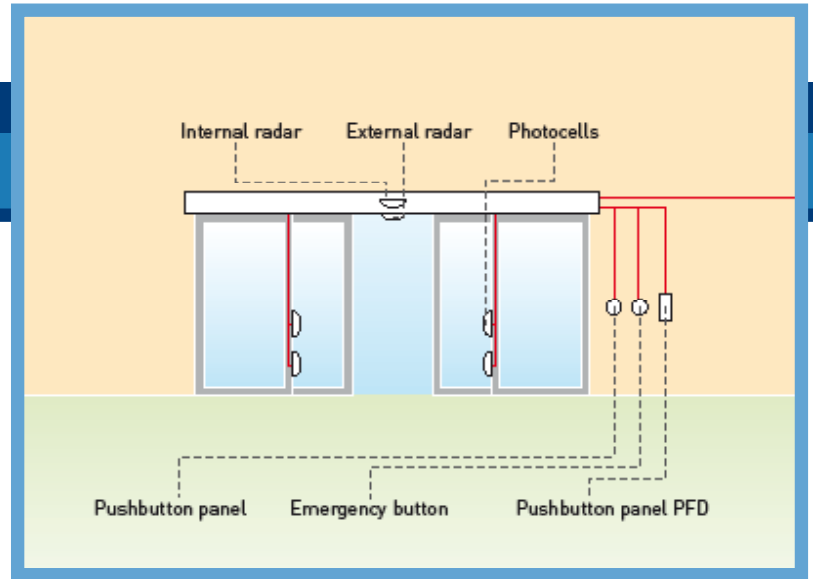
TECHNICAL SPECIFICATIONS

	LINEA1	LINEA2
CONTROL PANEL	AD LINEA (incorporated)	AD LINEA (incorporated)
REVERSIBLE/IRREVERSIBLE OPERATOR	reversible	reversible
POWER SUPPLY	230 V~ ± 10%, 50 Hz single-phase (*)	230 V~ ± 10%, 50 Hz single-phase (*)
ACCESSORY POWER SUPPLY	24 Vac-dc 0,4 A max	24 Vac-dc 0,4 A max
USEFUL PASSAGE	min 750 mm - max 2550 mm	min 800 mm - max 2900 mm
CAPACITY	150 kg	120 + 120 kg
ABSORBED CURRENT	1 A	1 A
OPENING SPEED	adjustable up to 90 cm/s	adjustable up to 180 cm/s
CLOSING SPEED	adjustable up to 35 cm/s	adjustable up to 70 cm/s
APPROACH SPEED	up to 10 cm/s	up to 20 cm/s
AUTOMATIC CLOSING TIME	from 1 to 60 s	from 1 to 60 s
ENVIRONMENTAL CONDITIONS	from 0 to 50 °C (inside carter)	from 0 to 50 °C (inside carter)
WORKING CYCLE	continuous	continuous
BRAKE CONTROL	adjustable	adjustable
ANTICRUSHING	anticrush safety device	anticrush safety device
BACK-UP BATTERIES	(optional) 2x12V 1,2 A/h	(optional) 2x12V 1,2 A/h

*Available for all voltage ratings.



CASE LENGTH (L) LEAF LENGTH (A)
 CLEAR OPENING SIZE (B) FIXED PART (PF) A+50



CODE	DESCRIPTION	VOLTAGE	B MM	A MM	L MM	ANODIZED GUARD*
LINEA 1						
P960414 00002	LINEA 107	24 V	750	800	1600	P111336 00002
P960433 00002	LINEA 108	24 V	850	900	1800	P111343 00002
P960434 00002	LINEA 109	24 V	950	1000	2000	P111344 00002
P960418 00002	LINEA 110	24 V	1050	1100	2200	P111345 00002
P960435 00002	LINEA 111	24 V	1150	1200	2400	P111342 00002
P960419 00002	LINEA 112	24 V	1250	1300	2600	P111341 00002
P960417 00002	LINEA 113	24 V	1350	1400	2800	P111339 00002
P960436 00002	LINEA 114	24 V	1450	1500	3000	P111346 00002
P960437 00002	LINEA 115	24 V	1550	1600	3200	P111347 00002
P960438 00002	LINEA 116	24 V	1650	1700	3400	P111348 00002
P960439 00002	LINEA 117	24 V	1750	1800	3600	P111338 00002
P960440 00002	LINEA 119	24 V	1950	2000	4000	P111337 00002
P960441 00002	LINEA 121	24 V	2150	2200	4400	P111349 00002
P960442 00002	LINEA 123	24 V	2350	2400	4800	P111350 00002
P960443 00002	LINEA 125	24 V	2550	2600	5200	P111351 00002
LINEA 2						
P960421 00002	LINEA 208	24 V	800	2X500	1900	P111343 00002
P960422 00002	LINEA 209	24 V	900	2X500	2000	P111344 00002
P960423 00002	LINEA 210	24 V	1000	2X550	2200	P111345 00002
P960420 00002	LINEA 211	24 V	1100	2X600	2400	P111342 00002
P960424 00002	LINEA 212	24 V	1200	2X650	2600	P111341 00002
P960425 00002	LINEA 213	24 V	1300	2X700	2800	P111339 00002
P960412 00002	LINEA 214	24 V	1400	2X750	3000	P111346 00002
P960426 00002	LINEA 215	24 V	1500	2X800	3200	P111347 00002
P960427 00002	LINEA 216	24 V	1600	2X850	3400	P111348 00002
P960416 00002	LINEA 217	24 V	1700	2X900	3600	P111338 00002
P960415 00002	LINEA 219	24 V	1900	2X1000	4000	P111337 00002
P960428 00002	LINEA 221	24 V	2100	2X1100	4400	P111349 00002
P960429 00002	LINEA 223	24 V	2300	2X1200	4800	P111350 00002
P960430 00002	LINEA 225	24 V	2500	2X1300	5200	P111351 00002
P960431 00002	LINEA 227	24 V	2700	2X1400	5600	P111352 00002
P960432 00002	LINEA 229	24 V	2900	2X1500	6000	P111353 00002

* For Natural Aluminium Guards, give the Anodised Guard codes with 00001 instead of 00002.



PPA
Aluminium clamp for tempered glass doors with no frame

MODEL	mm	CODE
MOD. 107	10	P111159 00001
	12	P111159 00063
MOD. 108	10	P111159 00002
	12	P111159 00064
MOD. 109	10	P111159 00003
	12	P111159 00065
MOD. 110	10	P111159 00004
	12	P111159 00066
MOD. 111	10	P111159 00005
	12	P111159 00067
MOD. 112	10	P111159 00006
	12	P111159 00068
MOD. 113	10	P111159 00007
	12	P111159 00069
MOD. 114	10	P111159 00008
	12	P111159 00070
MOD. 115	10	P111159 00009
	12	P111159 00071
MOD. 116	10	P111159 00010
	12	P111159 00072
MOD. 117	10	P111159 00011
	12	P111159 00073
MOD. 119	10	P111159 00012
	12	P111159 00074
MOD. 121	10	P111159 00013
	12	P111159 00075
MOD. 123	10	P111159 00014
	12	P111159 00076
MOD. 125	10	P111159 00015
	12	P111159 00077
MOD. 208	10	P111159 00016
	12	P111159 00078

MODEL	mm	CODE
MOD. 209	10	P111159 00017
	12	P111159 00079
MOD. 210	10	P111159 00018
	12	P111159 00080
MOD. 211	10	P111159 00019
	12	P111159 00081
MOD. 212	10	P111159 00020
	12	P111159 00082
MOD. 213	10	P111159 00021
	12	P111159 00083
MOD. 214	10	P111159 00022
	12	P111159 00084
MOD. 215	10	P111159 00023
	12	P111159 00085
MOD. 216	10	P111159 00024
	12	P111159 00086
MOD. 217	10	P111159 00025
	12	P111159 00087
MOD. 219	10	P111159 00026
	12	P111159 00088
MOD. 221	10	P111159 00027
	12	P111159 00089
MOD. 223	10	P111159 00028
	12	P111159 00090
MOD. 225	10	P111159 00029
	12	P111159 00091
MOD. 227	10	P111159 00030
	12	P111159 00092
MOD. 229	10	P111159 00031
	12	P111159 00093



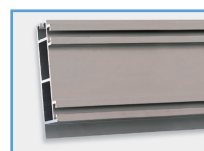
ACCESSORIES

**D113626 - PFD**

Digital pushbutton panel for LINEA, for: - selecting the desired function using an appropriate key for the door, possible by entering a user code - modifying the operating parameters and the operating logic of the door after entering an installer code - set personal user and installer codes.

**N733320 - NCE**

Electromagnetic latch for LINEA.

**P111330 00002 - NTS**

Anodised Door operator support beam in anodised aluminium for LINEA.

**P111325 - RIP(*)**

Broad/narrow band active multifunctional infrared radar.

**P111402 00001 - ACTIVE8 TWO PB**

Safety and presence sensor.

**P111403 - EAGLE ONE**

Unidirectional presence sensor. TELECOMANDO needed for programming.

**P111404 - SEAGLE TWO**

Bidirectional presence sensor.

**P111407 - FALCON**

Industrial presence sensor. Provided with a 6m cable. TELECOMANDO needed for programming.

**P111405 - TELECOMANDO**

Remote control for Eagle, Active8 and Falcon. TELECOMANDO needed for programming.

**P111406 - SPOTFINDER**

Infrared light-cone detector.

**P111265 - FPA 1**

1 pair of photocells with a pair of sensors.

**P111266 - FPA 2**

1 pair of photocells with two pairs of sensors.

**P111267 - DAB-1**

Battery-powered antipanic device, which can be installed to doors.

**P111163 00001 - SASAM 1**

Antipanic break-open system in natural aluminium for a mobile leaf. Max L 1100 mm.

**P111163 00002 - SASAM 1**

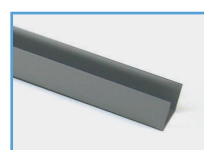
SASAM 1 version in anodised aluminium. Max L 1100 mm.

**P111263 00001 - SASAM 2**

Antipanic break-open system in natural aluminium for two mobile leaves. Max L 1100 mm.

**P111263 00002 - SASAM 2**

SASAM 2 version in anodised aluminium. Max L 1100 mm.

**P111158 - PGI**

Bottom door guide profile for aluminium frame.

**P111156 - PPR (**)**

Runner for bottom guide for aluminium frame. If a door has one leaf, use one runner, if the two door has two leaves, use two runners.

* If access is required both for entrance and exit, order no. 2 RIP radars.

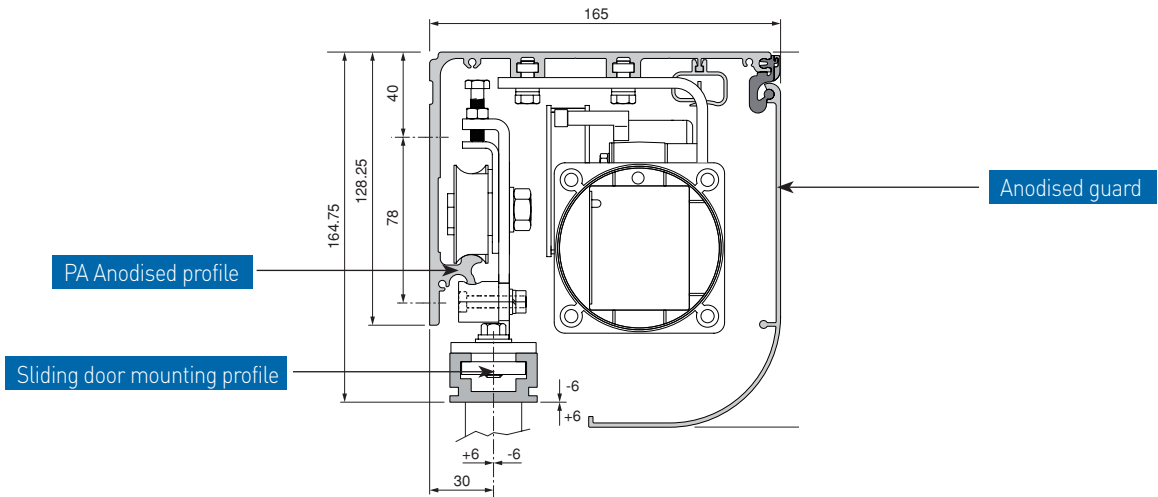
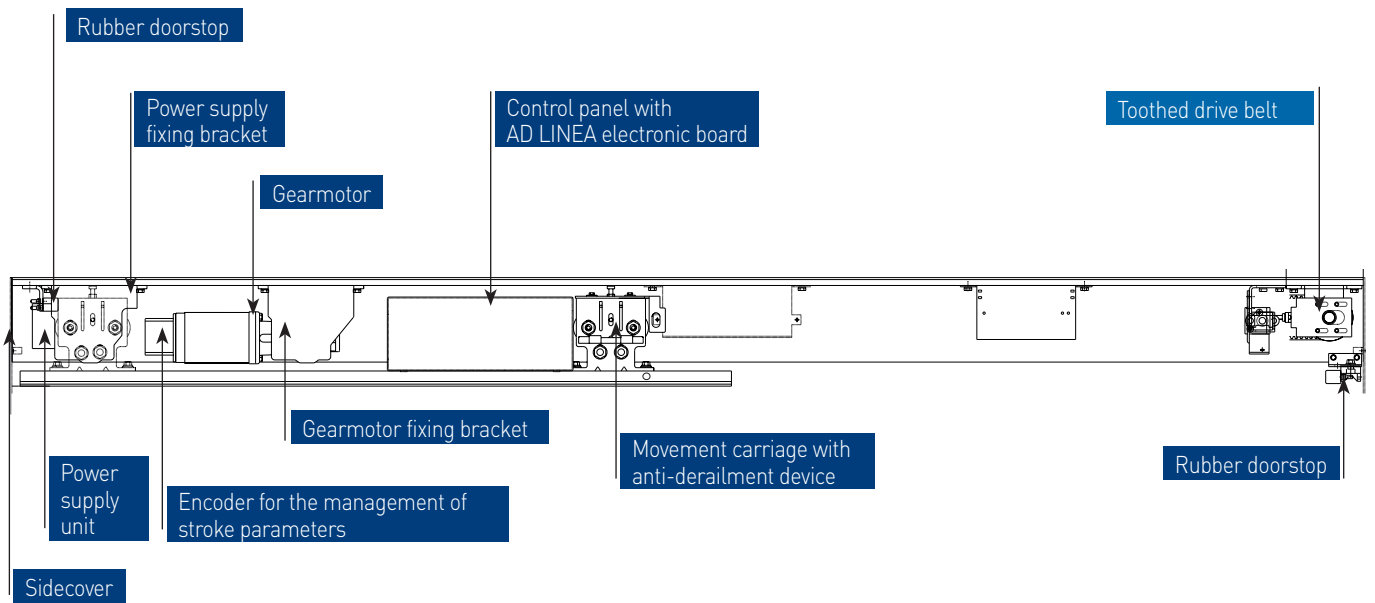
** For one-leaf doors use 1 runner, for two-leaf doors use 2 runners.

LINEA KIT

ELECTROMECHANICAL AUTOMATION FOR PEDESTRIANS DOORS

Components contained in the LINEA 1 and LINEA 2 kits

Hardware necessary for completing the installation





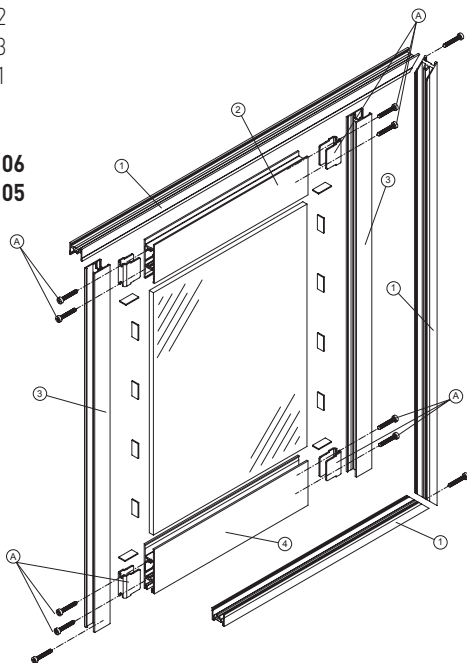
CODE	DESCRIPTION	
P960444 00002	AUTOMATIC SLIDING DOOR KIT	Complete kit for the installation of a LINEA 1 230V single-leaf sliding door
P960445 00002	AUTOMATIC SLIDING DOOR KIT	Complete kit for the installation of a LINEA 2 230V double-leaf sliding door
TO COMPLETE INSTALLATION OF THE AUTOMATIC SLIDING DOOR, THE FOLLOWING ACCESSORIES MUST BE USED:		
D191016		Toothed drive belt
D729034		Sliding door mounting profile
D729120	PA	Anodised PA profile
D729119	CARTER	Anodised guard
D729121		Anodised front profile
D221886		Carter hinge

ASSEMBLY OF FIXED DOOR SYSTEM

- 1 D610303 - D729104
- 2 D610301 - D729102
- 3 D610302 - D729103
- 4 D610300 - D729101

A N999190

- *D610305 - D729106
- *D610304 - D729105
- *N999304
- *N999314
- *N999315

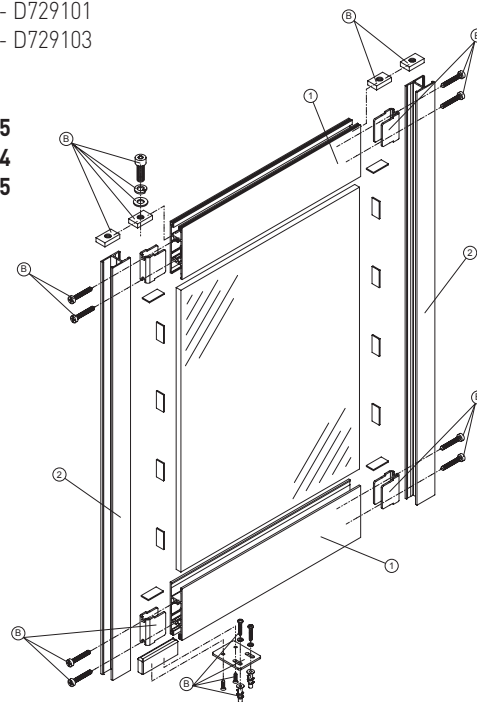


ASSEMBLY AND INSTALLATION OF SLIDING DOOR

- 1 D610300 - D729101
- 2 D610302 - D729103

B P960500

- *N999315
- *N999314
- *N999305

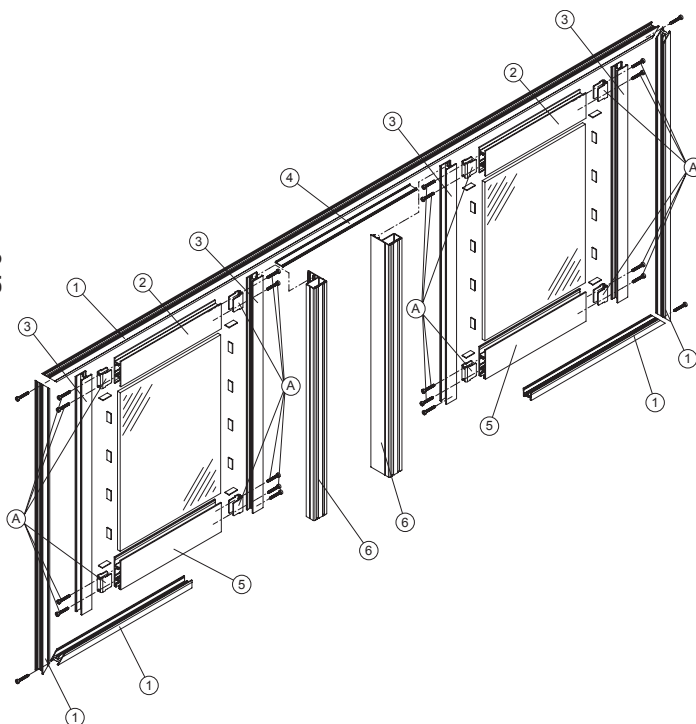


ASSEMBLY OF DOUBLE FIXED DOOR SYSTEM

- 1 D610303 - D729104
- 2 D610301 - D729102
- 3 D610302 - D729103
- 4 D610306 - D729107
- 5 D610300 - D729101
- 6 D610304 - D729105

A N999190

- *D610305 - D729106
- *D610304 - D729105
- *N999304
- *N999314
- *N999315



NOTES

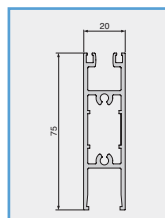
Channel sections are supplied in 5m lengths and weatherstripping in 30m rolls.

The quantity of each item thus varies according to door size.

* Product codes marked with an asterisk are not shown in technical drawings. For more details please refer to chart

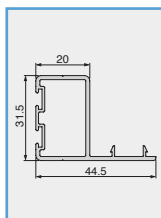


DOOR PROFILE AND SEALS FOR FRAMED DOORS (20 mm SERIES)



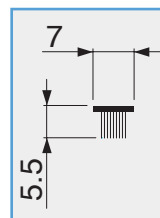
D610300
Natural top profile for bottom mobile leaf, fixed and mobile leaf.

D729101
Anodised top profile for bottom mobile leaf fixed and mobile leaf.

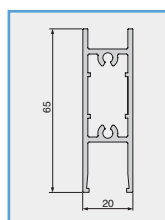


D610304
Natural edge profile / photocell holder.

D729105
Anodised edge profile / photocell holder.

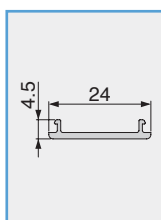


N999304
Side sealing brush pack. (30 metres)



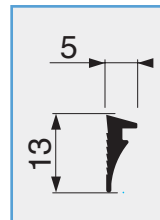
D610301
Natural top profile for fixed leaf.

D729102
Anodised top profile for fixed leaf.

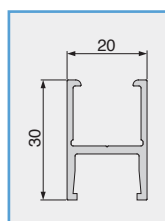


D610306
Natural latch profile.

D729107
Anodised latch profile.

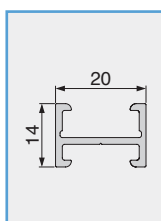


N999314
Glass stopper seal pack. (30 metres)



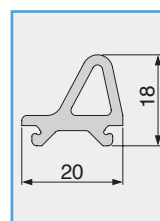
D610302
Natural jamb profile.

D729103
Anodised jamb profile.

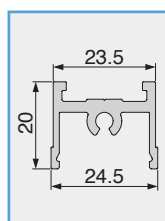


D610305
Natural weather strip profile.

D729106
Anodised weather strip profile.

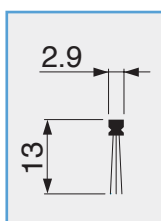


N999315
Leaf latch seal pack. (30 metres)



D610303
Natural frame profile.

D729104
Anodised frame profile.



N999305
Mobile leaf sealing brush pack. (30 metres)

N999190
Accessory pack for constructing 1 fixed leaf. See drawing (A)

P960500
Accessory pack for assembling 1 mobile leaf. See drawing (B)

* Available in 5 m bars

- The 20 mm contours are not suitable with the SASAM antipanic system.
- The 20 mm contours are available also painted upon request.



ITALIA

BFT S.P.A.

Via Lago di Vico 44
36015 Schio (Vi) / Italy
tel. +39 0445 69 65 11
fax +39 0445 69 65 22
www.bft.it
e-mail: info@bft.it

GREAT BRITAIN

BFT AUTOMATION UK LTD

Unit 8E, Newby Road
Industrial Estate
Hazel Grove, Stockport,
Cheshire, SK7 5DA - UK
tel. +44 (0) 161 4560456
fax +44 (0) 161 4569090
info@bftautomation.co.uk
www.bftautomation.co.uk

FRANCE

AUTOMATISMES BFT FRANCE

Multiparc de Parilly
50 Rue Jean Zay, Bat C
69800 Saint priest - France
tel. +33 (0)4 78 76 09 88
fax +33 (0)4 78 76 92 23
contacts@automatismes-bft-
www.bft-france.com

GERMANY

BFT TORANTRIEBSSYSTEME GMBH

Faber-Castell-Straße 29
90522 Oberasbach - Germany
Tel. +49 (0)911 766 00 90
Fax +49 (0)911 766 00 99
service@bft-torantriebe.de
www.bft-torantriebe.de

CROATIA

BFT-ADRIA d.o.o.

Obrovac 39
51218 Dražice (Rijeka)
Hrvatska - Croatia
tel. +385 (0)51 502 640
fax +385 (0)51 502 644
info@bft.hr
www.bft.hr

USA

BFT USA

BFT U.S., Inc.
6100 Broken Sound Pkwy. N.W.
Suite 14
Boca Raton, FL 33487,
U.S.A.
T: +1 561.995.8155
F: +1 561.995.8160
info.bft@bft-usa.com
www.bft-usa.com

PORTUGAL

BFT SA-COMERCIO DE AUTOMATISMOS E MATERIAL DE SEGURANÇA

urbanização da pedrulha, lote 9
apartado 8123,
3020-305 Coimbra - Portugal
tel. +351 239 082 790
fax +351 239 082 799
geral@bftportugal.com
www.bftportugal.com

SPAIN

BFT GROUP ITALIBERICA DE AUTOMATISMOS S.L.

www.bftautomatismos.com

Pol. Palou Nord,

Sector F - C/Cami - Can Basa nº 6-8
08401 Granollers - (Barcelona) - Spain
tel. +34 938 61 48 28
fax +34 938 70 03 94
bftbcn@bftautomatismos.com

P.I. Comendador - C/

informática, Nave 22 - 19200
Azuqueca de henares
(Guadalajara) - Spain
tel. +34 949 26 32 00
fax +34 949 26 24 51
administracion@bftautomatismos.com

POLAND

BFT Polska Sp.z o.o.

Ul. Lipowa 21
05-091 ZĄBKI
tel. +48 0 22 781 60 55
fax +48 0 22 781 60 22
e-mail: biuro@bft.com.pl
www.bft.pl

BELGIUM

BFT BENELUX SA

Parc Industriel 1
Rue du commerce 12
1400 Nivelles - Belgium
tel. +32 (0)67 55 02 00
fax +32 (0)67 55 02 01
info@bftbenelux.be
www.bftbenelux.be

AUSTRALIA

BFT AUTOMATION AUSTRALIA PTY LTD

29, Bentley Street
Wetherill Park NSW 2164
Australia
Tel: +61 (0) 2 9757 0677
Fax: +61 (0) 2 9725 4225
info@bftaustralia.com.au
www.bftaustralia.com.au